

# Swing Joint

1/2", 3/4" & 1"



## Technical Specifications

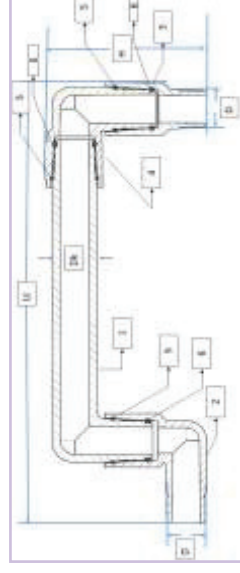
- **End connections** : 1/2", 3/4" & 1" Male Threaded
- **Max. Operating Pressure**: 1/2" & 3/4" Swing Joint: 6 Bar 1" Swing Joint: 20 BAR
- **Material**: 1/2" & 3/4" Swing Joint: Polypropylene (PP) 1" Swing Joint: PVC
- Can be easily move in desired direction
- User friendly design allows smooth operation.
- Double O-rings to prevent leakages.
- Chemical/Corrosion resistant, Color UV stabilized.
- Industrial , chemical, turf & agriculture irrigation system, pool and spa application.

## Material Specification (For 1/2" & 3/4")

PART NO	PART NAME	MATERIAL	Qty
1	Elbow	HDPE	2
2	Pipe	HDPE	1

## Specification of Material (1" Swing Joint)

PART NO	PART NAME	MATERIAL	Qty
1	Body	UPVC	1
2	Without Rib Elbow	UPVC	1
3	Adapter	UPVC	1
4	Ribbed Elbow	UPVC	1
5	1" Swing Joint Main O-Ring	NBR	3
6	2" VI Regulating Valve O-Ring	NBR	3



## Dimensions (mm)

Norm Size	BSP Thd./in	NPT Thd./in	dk mm	Lt mm	H mm
15mm (1/2")	11	11.5	17	400	55.0
20mm (3/4")	11	11.5	17	400	57.5
25mm (1")	11	11.5	36.7	372	132.5