

# T Type Disc Filters

## AQ-135T(HC)



|  |                            |
|--|----------------------------|
| Max. Operating Pressure                              | 8 Kg/cm <sup>2</sup>       |
| Clamp Material                                       | Nylon Reinforced           |
| Vacuum Breaker                                       | For upside up installation |
| Drain port location                                  | Front of the filter Body   |
| Flow passes through outside to inside of Disc stake. |                            |

## AQ-135T



|  |                          |
|--|--------------------------|
| Max. Operating Pressure                              | 10 Kg/cm <sup>2</sup>    |
| Clamp Material                                       | Stainless Steel          |
| Vacuum Breaker                                       | Not fit with this design |
| Drain port location                                  | Below the Filter barrel  |
| Flow passes through outside to inside of Disc stake. |                          |

| Specifications           | AQ-135T(HC) & AQ-135T          |                          |
|--------------------------|--------------------------------|--------------------------|
|                          | US Standard                    | Metric Standard          |
| Inlet / outlet           | 2 1/2" NPT                     | 2 1/2" BSP               |
| Range of Flow Rate       | 110-155 GPM                    | 25-35 m <sup>3</sup> /hr |
| Nominal Flow Rate        | 130 GPM                        | 30 m <sup>3</sup> /hr    |
| Filtration Surface Area  | 136 in <sup>2</sup>            | 878cm <sup>2</sup>       |
| Material of Construction | Polypropylene Glass Reinforced |                          |
| Material of Disc         | Polypropylene Disc             |                          |
| Cartridge Diameter       | 5.2 Inches                     | 131mm                    |
| Cartridge Length         | 11.8 Inches                    | 300mm                    |
| Available Mesh           | 120, 150                       | 120, 150                 |

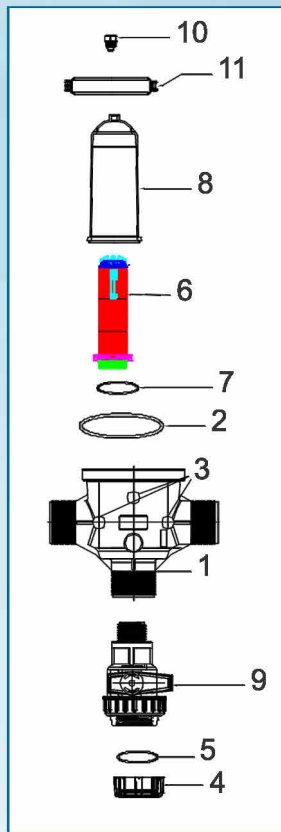
### Filtering Element

- 120 Mesh
- 150 Mesh

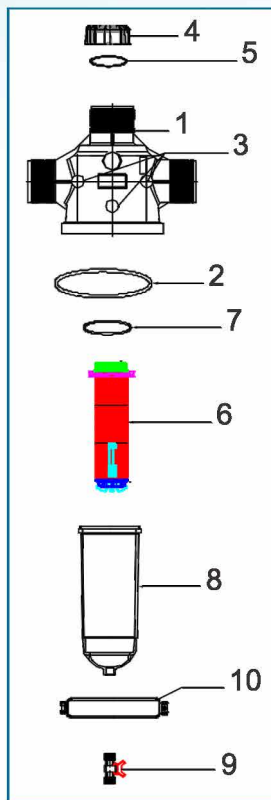
### Flow Loss : AQ-135T(HC)

| Flow m <sup>3</sup> /hr          | 20   | 25   | 30   | 35   |
|----------------------------------|------|------|------|------|
| Pressure Loss kg/cm <sup>2</sup> | 0.12 | 0.16 | 0.24 | 0.32 |
| Flow GPM                         | 88   | 110  | 130  | 155  |
| Pressure Loss PSI                | 1.70 | 2.27 | 3.27 | 4.64 |

# T Type Disc Filters



| 2 1/2" Disc Filter [Model 135 T(HC) - 30 m <sup>3</sup> /hr] |  |                 |                     |              |
|--|--|-----------------|---------------------|--------------|
| AIPL CODE  | DESCRIPTION  | INLET/OUTLET    | CONNECTION SIZE     | MICRON /MESH |
| 14350028   | 2 1/2" Disc Filter T-Type (With Hybrid Clamp) 120 Mesh | Male Thread NPT | 2 1/2"              | 130/120      |
| 14070084   | 2 1/2" Disc Filter T-Type (With Hybrid Clamp) 120 Mesh | Male Thread BSP | 2 1/2"              | 130/120      |
| SPARE PARTS  |  |                 |                     |              |
| S. NO  | PARTS NAME   | PART CODE       | MATERIAL            | QTY          |
| 1  | Plain Body (BSP Thread)                                | 12490077        | Glass reinforced PP | 1            |
|  | Plain Body (NPT Thread)                                | 12490126        |                     |              |
| 2  | Gasket   | 50030031        | NBR                 | 1            |
| 3  | Brass Bush   | 50100033        | Brass               | 3            |
| 4  | End Cap (BSP Thread)                                   | 12490120        | Glass reinforced PP | 1            |
|  | End Cap (NPT Thread)                                   | 12490129        |                     |              |
| 5  | End Cap O-Ring   | 14120001        | NBR                 | 1            |
| 6  | Disc Cartridge (120 Mesh)                              | 14130004        | Glass reinforced PP | 1            |
|  | Disc Cartridge (150 Mesh)                              | 14130010        |                     |              |
| 7  | Cartridge O-Ring                                       | 50010087        | NBR                 | 1            |
| 8  | Barrel   | 12490116        | Glass reinforced PP | 1            |
| 9  | 3/4"x3/4" FXM Ball Valve                               | 19070001        | PP                  |              |
| 10   | 3/4" Vacuum Breaker                                    | 25100051        | Glass reinforced PP | 1            |
| 11   | Hybrid Clamp (SS Long Handle)                          | 14050038        | Glass reinforced PA | 1            |



| 2 1/2" Disc Filter (Model 135 T - 30 m <sup>3</sup> /hr) |   |                 |                     |              |
|--|---|-----------------|---------------------|--------------|
| AIPL CODE  | DESCRIPTION                                       | INLET/OUTLET    | CONNECTION SIZE     | MICRON /MESH |
| 14340003   | 2 1/2" Disc Filter T-Type (With SS Clamp) 120MESH | Male Thread NPT | 2 1/2"              | 130/120      |
| 14010005   | 2 1/2" Disc Filter T-Type (With SS Clamp) 120MESH | Male Thread BSP | 2 1/2"              | 130/120      |
| SPARE PARTS  |   |                 |                     |              |
| S. NO  | PARTS NAME  | PART CODE       | MATERIAL            | QTY          |
| 1  | Plain Body (BSP Thread)                           | 12490077        | Glass reinforced PP | 1            |
|  | Plain Body (NPT Thread)                           | 12490126        |                     |              |
| 2  | Gasket  | 50030031        | NBR                 | 1            |
| 3  | Brass Bush  | 50100033        | Brass               | 3            |
| 4  | End Cap (BSP Thread)                              | 12490120        | Glass reinforced PP | 1            |
|  | End Cap (NPT Thread)                              | 12490129        |                     |              |
| 5  | End Cap O-Ring                                    | 14120001        | NBR                 | 1            |
| 6  | Disc Cartridge (120 Mesh)                         | 14130004        | Glass reinforced PP | 1            |
|  | Disc Cartridge (150 Mesh)                         | 14130010        |                     |              |
| 7  | Cartridge O-Ring                                  | 50010087        | NBR                 | 1            |
| 8  | Barrel  | 12490116        | Glass reinforced PP | 1            |
| 9  | 3/4"x3/4" MXM Mini Valve (Red Knob)               | 19030017        | POM                 | 1            |
| 10   | SS Clamp (Long Handle)                            | 14010060        | SS 304              | 1            |