

T Type Disc Filters

AQ-135TL(HC)



Max. Operating Pressure	8 Kg/cm ²
Clamp Material	Nylon Reinforced
Vacuum Breaker	For upside up installation
Drain port location	Front of the filter Body
Flow passes through outside to inside of Disc stake.	

AQ-135TL



Max. Operating Pressure	10 Kg/cm ²
Clamp Material	Stainless Steel
Vacuum Breaker	Not fit with this design
Drain port location	Below the Filter barrel
Flow passes through outside to inside of Disc stake.	

Specifications	AQ-135TL(HC) & AQ-135TL	
	US Standard	Metric Standard
Inlet / outlet	2 1/2" NPT	2 1/2" BSP
Range of Flow Rate	155-200 GPM	35-45 m ³ /hr
Nominal Flow Rate	176 GPM	40 m ³ /hr
Filtration Surface Area	185 in ²	1193cm ²
Material of Construction	Polypropylene Glass Reinforced	
Material of Disc	Polypropylene Disc	
Cartridge Diameter	5.2 Inches	131mm
Cartridge Length	15.75 Inches	400mm
Available Mesh	120, 150	120, 150

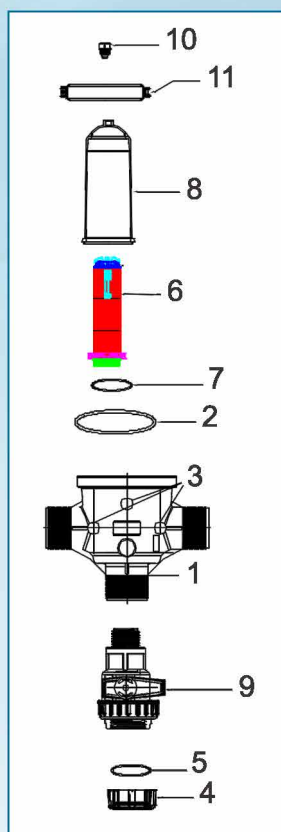
Filtering Element

- 120 Mesh
- 150 Mesh

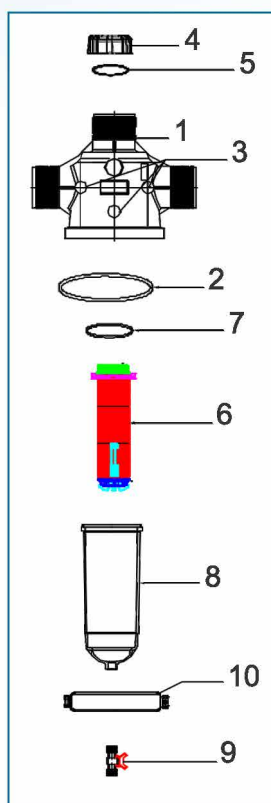
Flow Loss : AQ-135TL

Flow m ³ /hr	28	35	40	45
Pressure Loss kg/cm ²	0.10	0.22	0.29	0.37
Flow GPM	123	155	175	200
Pressure Loss PSI	1.37	3.06	4.03	5.43

T Type Disc Filters



2 1/2" Disc Filter [Model 135 TL(HC) - 40 m ³ /hr]				
AIPL CODE	DESCRIPTION	INLET/OUTLET	CONNECTION SIZE	MICRON /MESH
14350030	2 1/2" Disc Filter T-Type (With Hybrid Clamp) 120 Mesh	Male Thread NPT	2 1/2"	130/120
14070086	2 1/2" Disc Filter T-Type (With Hybrid Clamp) 120 Mesh	Male Thread BSP	2 1/2"	130/120
SPARE PARTS				
S. NO	PARTS NAME	PART CODE	MATERIAL	QTY
1	Plain Body (BSP Thread)	12490077	Glass reinforced PP	1
	Plain Body (NPT Thread)	12490126		
2	Gasket	50030031	NBR	1
3	Brass Bush	50100033	Brass	3
4	End Cap (BSP Thread)	12490120	Glass reinforced PP	1
	End Cap (NPT Thread)	12490129		
5	End Cap O-Ring	14120001	NBR	1
6	Disc Cartridge (120 Mesh)	14010047	Glass reinforced PP	1
	Disc Cartridge (150 Mesh)	14010049		
7	Cartridge O-Ring	50010087	NBR	1
8	Barrel	12490007	Glass reinforced PP	1
9	3/4"x3/4" FXM Ball Valve	19070001	PP	1
10	3/4" Vacuum Breaker	25100051	Glass reinforced PP	1
11	Hybrid Clamp (SS Long Handle)	14050038	Glass reinforced PA	1



2 1/2" Disc Filter [Model 135 TL - 40 m ³ /hr]				
AIPL CODE	DESCRIPTION	INLET/OUTLET	CONNECTION SIZE	MICRON /MESH
14340004	2 1/2" Disc Filter T-Type (With SS Clamp) 120 Mesh	Male Thread NPT	2 1/2"	130/120
14010006	2 1/2" Disc Filter T-Type (With SS Clamp) 120 Mesh	Male Thread BSP	2 1/2"	130/120
SPARE PARTS				
S. NO	PARTS NAME	PART CODE	MATERIAL	QTY
1	Plain Body (BSP Thread)	12490077	Glass reinforced PP	1
	Plain Body (NPT Thread)	12490126		
2	Gasket	50030031	NBR	1
3	Brass Bush	50100033	Brass	3
4	End Cap (BSP Thread)	12490120	Glass reinforced PP	1
	End Cap (NPT Thread)	12490129		
5	End Cap O-Ring	14120001	NBR	1
6	Disc Cartridge (120 Mesh)	14010047	Glass reinforced PP	1
	Disc Cartridge (150 Mesh)	14010049		
7	Cartridge O-Ring	50010087	NBR	1
8	Barrel	12490007	Glass reinforced PP	1
9	3/4"x3/4" MXM Mini Valve (Red Knob)	19030017	POM BLACK	1
10	SS Clamp (Long Handle)	14010060	SS 304	1